

Electrical System

Electrical system overview and emergency power supply (generator)

- Electrical Installation
- Backup Generator
- PIR lights (motion sensors)
- Dimmer lights
- Light sensors with timer
- Emergency Lights
- Changing Light Bulbs
- Wall Clock

Electrical Installation

Nomenclature

Every switch and sockets are labeled:

BS/xx/xx

eg. DB/GF/01 = Distribution board, Ground Floor, 01 is by the monks eating room

DB/FF/xx = Distribution board, First Floor, xx

"DB/GF/01/2L3"

DB (*Distribution Board*)/**GF** (*Ground Floor*)/**01** (*Distribution Board Number*)/ **2L3** (*Circuit Code*)

Electrical Distribution Boards

The locations covered by four different Electric Distribution Boards in the Sala:

1. **Main Hall and Entrance Attic, Monastic Eating Areas (Monks & Nuns) and Sala Attic- *DB.GF.01*** - located in the Zafu Store on the southwestern side of the Main Hall in the Sala.
2. **Sala Main Entrance, Multi-Purpose Room, Toilets, Dana Drop-off Area - *DB.GF.03*** - located in the Cleaning Room near the entrance to the toilets.
3. **Kitchen, Flower Studio, Kitchen Attic - *DB.FF.KT*** - located in the northern room in the Kitchen Attic.
4. **Emergency Power Supply from Generator- *DB.FF.ESS*** (Essential Services) - located in the northern room in the Kitchen Attic.

Please note that the below layout plans below are '*Design Diagram*' these will vary to has actually been installed. ADL are waiting for 'As Building Drawings' from the electrical contractor which will show what was actually installed.

Location of Ground Floor Stairs Distribution Board: 6743-MXF-XX-00-DR-E-23100.pdf Please note that *DB.GF.02* was not installed.

Location of Upper Floor Distribution Boards 6743-MXF-XX-01-DR-E-23100.pdf

Wiring

All the wires to the light switches descend vertically from the ceiling. **There should never be any drilling done in this part of the wall.**

Backup Generator

The petrol generator is in the Main Electrical Room on the side of the workshop.

What is powered in the Kitchen

1. Sockets in the back wall (washing up)
2. Heat Pump ?
3. Hot Water ?

Procedure

1. Move it with its cable outside the Kitchen
2. Plug the cables and the earth to the generator
3. Check fuel and oil
4. Start
5. Turn on switches on sockets
6. Turn on Main switch in attic

Log

PIR lights (motion sensors)

No manual light switch in according areas

-disabled toilets (timer inside toilets besides ceiling light)

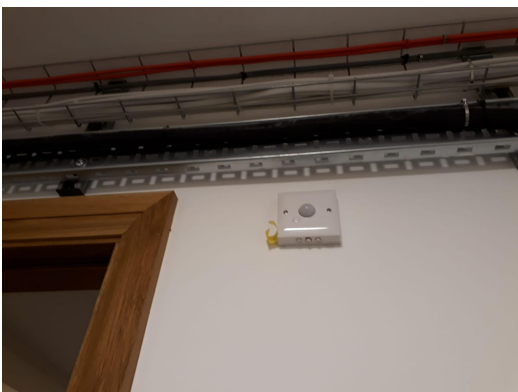
-all toilets (timer in the toilet besides ceiling light)

-monk's store room by the coat & shoes hall way

-nun's pigeon area (timer besides ceiling light)



-sluice / cleaning room (timer inside besides the door)



-lobby area (timer in the sala storage near monk's eating area entrance)

Disabled Toilets

To change the timer or the intensity one needs to pull the light down about 2cm. This allows access for a screwdriver to turn the switch.

Dimmer lights

Only in monks' and nuns' eating areas.

The dimmer light (white button) has a memory, so if you turn it on with a short hold it will automatically set itself to the previous brightness.

Press and hold to set the strength of the lights.

To dimming up or down, switch off and switch on and hold.



Light sensors with timer

Pendant light outside the main sala porch and lights in the sala lobby (shoe area) (2 X LED, 2 X pendant lights)

These lights are controlled by two sensors:

1) An analogue timer (this takes priority; so the lights can be automatically programmed to turn off during the middle period of the night).

2) Light sensors.

Lights gets automatically turned on/off via a light sensor that is activated by a timer (now set at 4 am - 10 pm). Since it is analogue, it will need resetting if we have a power cut.

For instance, light sensor automatically turns on / turns off the pendant light outside the main sala porch and lights (2 X LED, 2 X pendant lights) in the lobby when it detects darkness / light outside surrounding area.

Locations

of the light sensor: Adjacent to the external window for porch and sala lobby only.



of the timer: sala storage room (beside the fuse box)



All external lights between eastern side entrance of sala and workshop

Locations

of the light sensor: next to dana entrance



of the timer: kitchen attic store



There is also a timer in the workshop.

Emergency Lights

1. Next to Breaker Switch
2. Need key to rock switch

These need to be tested once a year by a professional.

If the green light is blinking it is probably due to a fault.

These have 2 power supplies. When the professional does the test they kill the permanent power supply to see if the battery is still working. The battery should last a minimum of 3 hours.

Changing Light Bulbs

Most of them in the building are integral and cannot be changed by us.

In the main chamber, the ones embedded in the shelf pointing downwards, and the ones on top of the shelf can be changed by us.

Every light bulb has a driver, so if you change a bulb and it doesn't work it is because the driver is faulty.

Wall Clock

- [QUIGO Large Digital Wall Clock Radio Controlled](#) 100 GBP



36.6W x 36.5H centimetres

- [Youshiko XXL 14.76" Jumbo LCD Radio Controlled](#) 59.99



37.5W x 22.5H centimetres

- [CHKOSDA Digital Wall Clock](#) 75



45W x 16H centimetres