

Entrances

Main entrance and lobby

Lobby

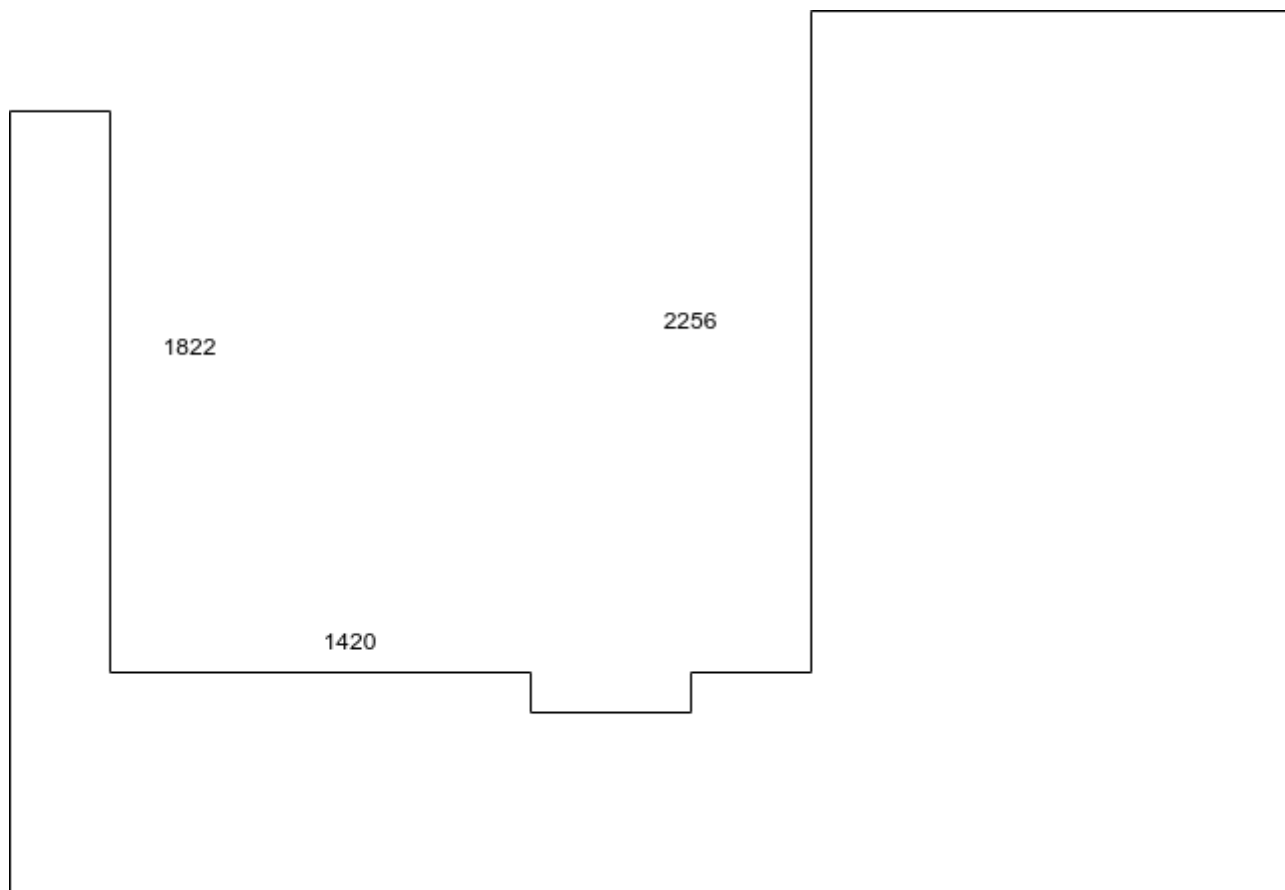
Many items are already arranged via Jigsawe - e.g. shoe racks, coat hooks.

Questions

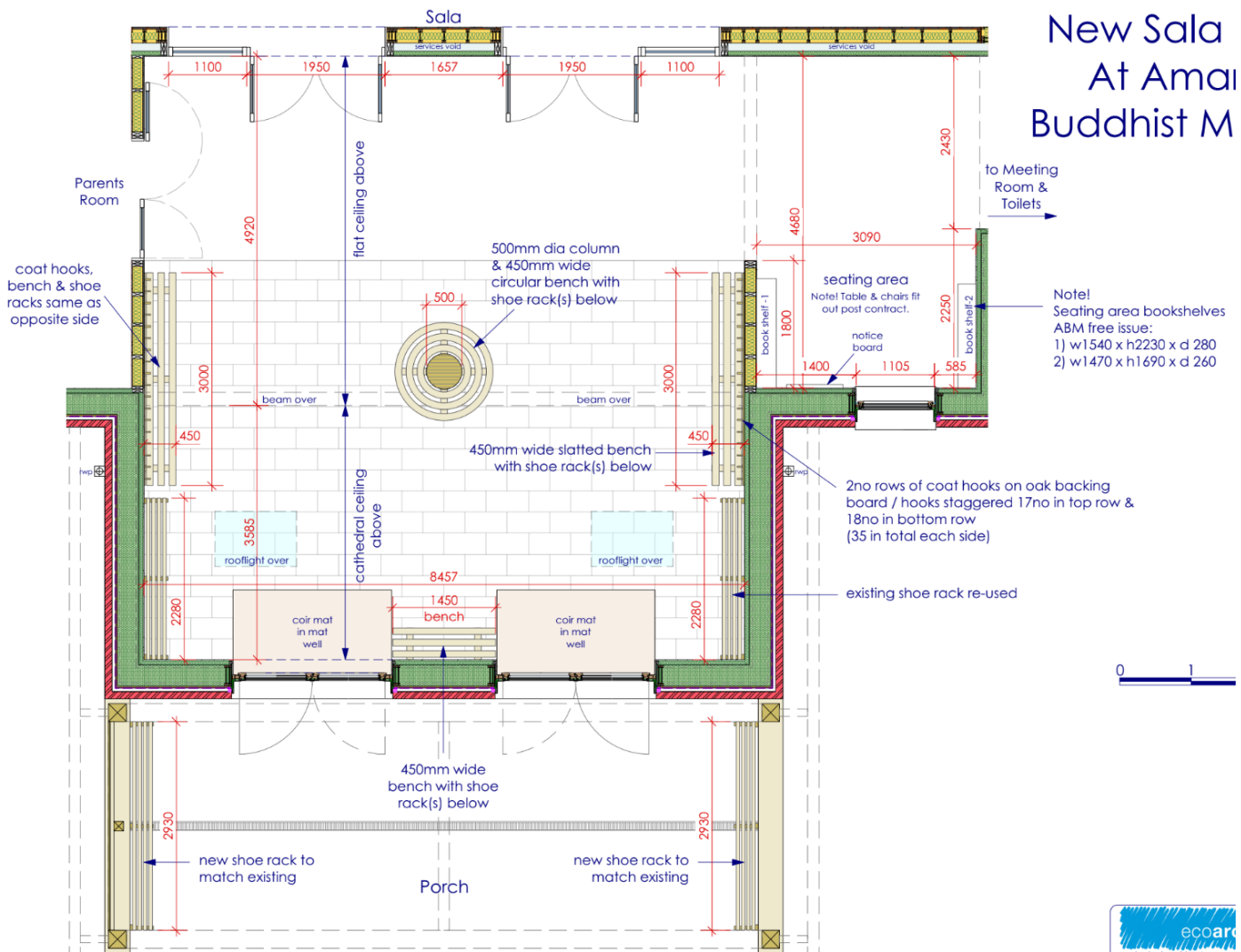
- Do we keep books in the temple area ? -> minimum or no books (somdet statue can go back ^)
- 3 shelves in Sala (saturday and Sunday a lot of people)
- How many shelves and which shelf go to the new sala? [Q][AA]

Free distribution Book (Publication area)

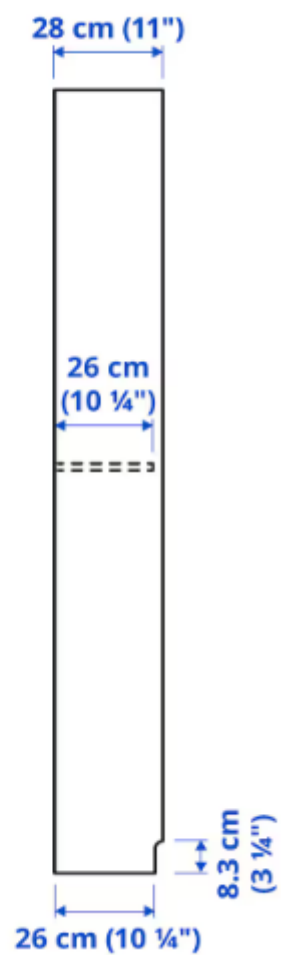
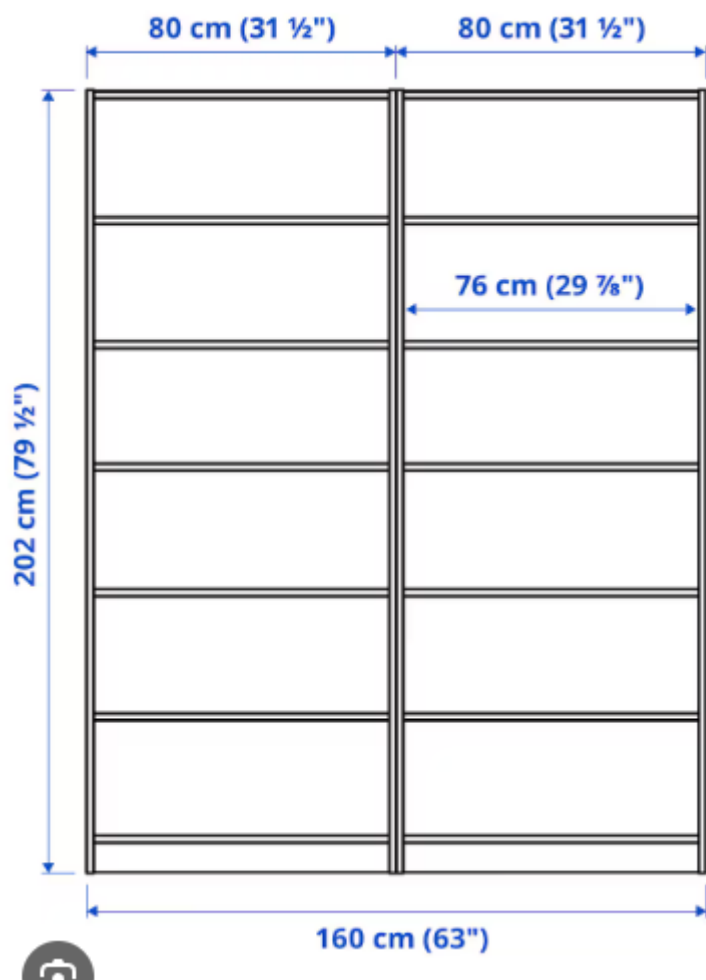
Bookcase

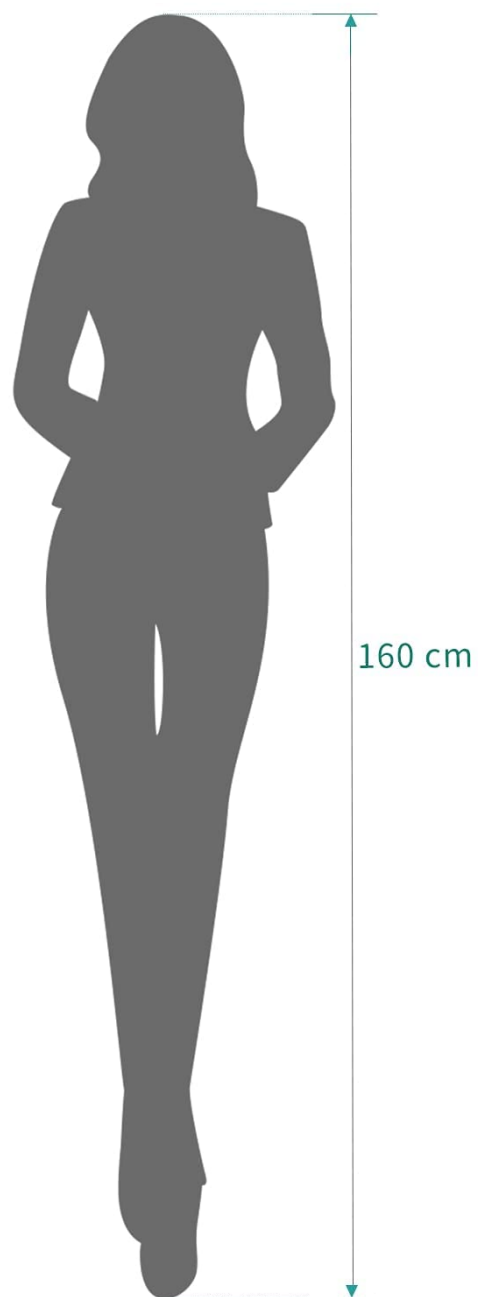


New Sala At Amar Buddhist M















Revision #11

Created 7 August 2024 09:54:27 by Cittadhammo Bhikkhu

Updated 7 October 2024 14:47:34 by Cittadhammo Bhikkhu