

Practical Information

- Calendar
- Communication Channels
- Budget
- Constraints

Calendar

Priorities

Which area to prioritise first?

1. **Kitchen Set Up** -> ordering -> installation -> training -> running
2. **Sala Set-Up** (Living Space, Entrances and Eating Area, bowl washing area) -> ordering -> storing -> running
3. **Audio/Video** (mic, PA, Live stream, recording of opening ceremony)
4. **Network** -> ordering -> installation -> switch over (done by Rachaya?)
5. **Storage** (moving out of RC, blue containers) -> shelving (ordering) -> moving & storing -> usable storage
6. Grounds
7. Recycle
8. Workshop
9. Flower
10. Garden

Calendar

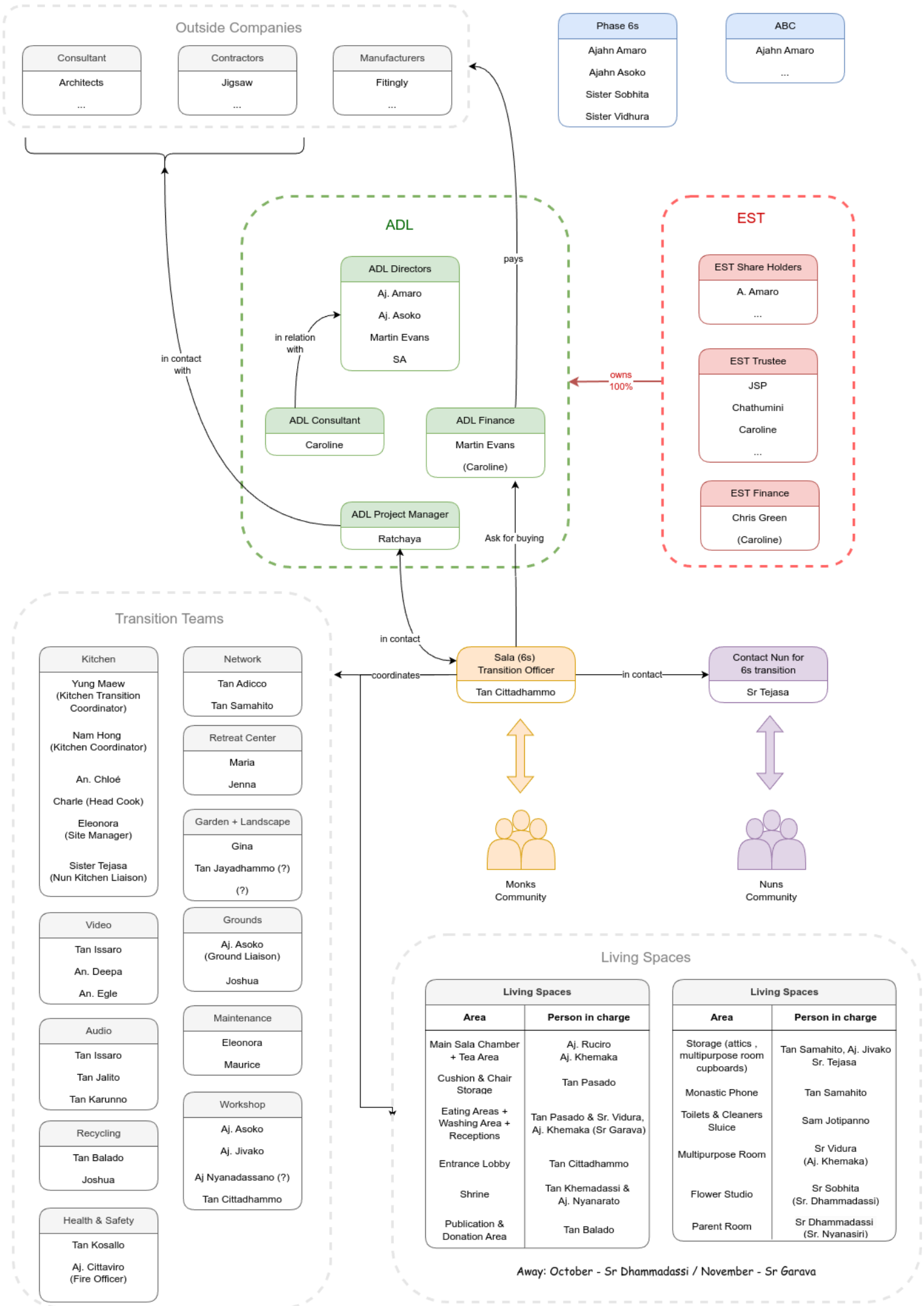
Calendar Link

[https://docs.google.com/spreadsheets/d/e/2PACX-](https://docs.google.com/spreadsheets/d/e/2PACX-1vQkWqmZlrpxm8K3hoMMvZvkwwKxix_9HoIUpDHujkwoehjprmLmynHaWvxPkazxAKp8yt-2Tsk8SCD/pubhtml?widget=true&headers=false)

[1vQkWqmZlrpxm8K3hoMMvZvkwwKxix_9HoIUpDHujkwoehjprmLmynHaWvxPkazxAKp8yt-2Tsk8SCD/pubhtml?widget=true&headers=false](https://docs.google.com/spreadsheets/d/e/2PACX-1vQkWqmZlrpxm8K3hoMMvZvkwwKxix_9HoIUpDHujkwoehjprmLmynHaWvxPkazxAKp8yt-2Tsk8SCD/pubhtml?widget=true&headers=false)

Communication Channels

Phase 6s Transition Communication Channels



Contact Nun for 6s Transition

The role of the Contact Nun for 6s Transition is to liaise every relevant information regarding the 6s transition to the nuns community and collect feedback and decision from them. This feedback and communal decision need to be communicated to the Sala Transition Officer.

Some area of the transition will particularly affect the nuns and a good communication channel need to be established: Nuns vestry, Nun's eating area, phone room, double servery, flower studio, storages, etc.

Useful documents

[Organisation chart Dec 2023 amended.pdf](#)

Notes

- Organisation workshop
- Feedback protocols
- Monthly meet up to present option/budget/etc.
- Decision-making process ABC, ASC, monks/nuns/LTLR meetings, ...)
- Do we have a public phone, not any more!
- Is there Wi-Fi everywhere, yes

Budget

Transition Budget

£100'000

Who pays

ADL pays for fixed installation

EST can pay for non-built-in installation

Constraints

- RC operational by end of May 2025
- Blue container rented to? [Q]. Input from Caroline (or EST secretary)
- Phase 7b Construction Commencement date - June 2026
- Phase 6s Practical Completion date -> 7th of November
- Budget and contractor for building storage? -> <https://www.fittingly.co.uk/>
- Budget and contractor for building workshop? [Q][AAs]